

Sechelt District Municipality

1	General
<p>Incorporated in 1956, Sechelt has a total land area of 39.71 square km (2006 Census). By highway the District is 23 km northwest of Gibsons, and 87 km southeast of Powell River by highway and ferry. Sechelt is in the Sunshine Coast Regional District.</p>	

2	Population Estimates				Age Distribution				
Annual Estimates					2011 Census			% Distribution, 2011 *	
Year	Sechelt	% Change Prev. Year	BC	% Change Prev. Year	Sechelt	Male	Female	Sechelt	BC
2007	8,767	n/a	4,309,632	n/a	All ages	4,395	4,900	100.0	100.0
2008	9,017	2.9	4,384,047	1.7	0 - 14	550	530	11.6	15.4
2009	9,176	1.8	4,459,947	1.7	15 - 24	405	410	8.8	12.6
2010	9,494	3.5	4,529,647	1.6	25 - 44	755	815	16.9	26.3
2011	9,727	2.5	4,573,321	1.0	45 - 64	1,475	1,710	34.3	30.0
					65 +	1,220	1,430	28.4	15.7

Source: Statistics Canada (as of July 1, includes estimate of Census undercount)

* based on published totals, both sexes

2006 Census Profiles can be found on our Website at <http://www.bcstats.gov.bc.ca/census.asp>

3	Selected Census Characteristics						
			Sechelt			British Columbia	
Characteristics	2001	2006	% Change	% Change	2001	2006	
Population	7,775	8,454	8.7	5.3	3,907,738	4,113,487	
Population (by citizenship)	7,700	8,330	8.2	5.3	3,868,875	4,074,385	
Non-immigrant	6,355	6,740	6.1	2.9	2,821,870	2,904,240	
Immigrant	1,335	1,510	13.1	10.8	1,009,820	1,119,215	
Labour force (15+ yrs.)	3,545	3,970	12.0	8.1	2,059,950	2,226,380	
Employees	2,635	2,970	12.7	9.2	1,715,600	1,873,050	
Self-employed	845	955	13.0	7.4	291,455	313,000	
Participation rate [ppt.=percentage points]	55.4%	54.7%	-0.7 ppt.	0.4 ppt.	65.2%	65.6%	
Unemployment rate	6.9%	3.4%	-3.5 ppt.	-2.5 ppt.	8.5%	6.0%	
Total population 25 to 64 years	3,890	4,395	13.0	6.5	2,144,050	2,284,465	
No certificate, diploma or degree	845	450	- 46.7	- 40.1	471,470	282,200	
High school certificate or equivalent	870	1,275	46.6	27.7	462,925	591,275	
Apprenticeship/trades certificate or diploma	675	615	- 8.9	- 7.4	295,180	273,450	
College, CEGEP or other cert. or diploma	910	1,090	19.8	11.3	401,760	447,005	
University certificate, diploma or degree	595	965	62.2	34.7	512,715	690,535	
Bachelor's degree	270	515	90.7	23.0	282,800	347,715	
Census families	2,290	2,530	10.5	6.9	1,086,030	1,161,420	
Lone-parent families	325	320	- 1.5	4.0	168,420	175,165	
Households	3,450	3,865	12.0	7.1	1,534,335	1,643,150	
1-family households	2,230	2,445	9.6	6.1	1,012,925	1,074,850	
Multi-family households	30	40	33.3	18.4	35,050	41,510	
Non-family households	1,185	1,380	16.5	8.3	486,355	526,785	
Median Income (2000 & 2005)	\$ 20,085	\$ 23,090	15.0	12.5	\$ 22,095	\$ 24,867	
Males	\$ 25,284	\$ 27,802	10.0	9.0	\$ 28,976	\$ 31,598	
Females	\$ 16,923	\$ 19,459	15.0	14.0	\$ 17,546	\$ 19,997	
Median Family Income (2000 & 2005)	\$ 46,694	\$ 56,989	22.0	20.0	\$ 54,840	\$ 65,787	
Economic Families	2,280	2,485	9.0	6.5	1,044,850	1,112,810	
2001 Incidence, low income 2006 Prevalence, low income	8.4%	8.7%	0.3 ppt.	-0.6 ppt.	13.9%	13.3%	
Unattached persons, 15+	1,330	1,575	18.4	4.7	576,825	603,880	
Incidence, low income	31.7%	32.4%	0.7 ppt.	-1.4 ppt.	38.1%	36.7%	
Population in private hh.	7,645	8,250	7.9	5.1	3,785,270	3,978,215	
Incidence, low income	13.4%	13.6%	0.2 ppt.	-0.5 ppt.	17.8%	17.3%	
Dwellings	3,445	3,865	12.2	7.1	1,534,335	1,643,150	
Owned	2,760	3,090	12.0	12.5	1,017,485	1,145,045	
Rented	680	770	13.2	- 3.6	512,360	493,995	
Average gross rent	\$ 641	\$ 778	21.4	10.4	\$ 750	\$ 828	
Average owners' payments	\$ 711	\$ 831	16.9	17.1	\$ 904	\$ 1,059	
Avg. value, owned dwell.	\$ 193,687	\$ 404,987	109.1	81.5	\$ 230,645	\$ 418,703	

Source: Statistics Canada. Notes: incomes are for 2005 and 2000; rent/owner's payments are restricted to non-farm, non-reserve private dwellings.

Sechelt District Municipality

4		Labour Force by Industry (NAICS)					
		Sechelt			BC	% Distribution, 2006	
Industry		2001	2006	% Change	% change	Sechelt	BC
Total labour force		3,545	3,970	12.0	8.1	100.0	100.0
Industry - Not applicable		50	30	- 40.0	- 26.6	0.8	1.5
All industries (Experienced LF)		3,495	3,940	12.7	8.9	99.2	98.5
111-112 Farms		55	70	27.3	5.2	1.8	1.8
113 Forestry and logging		160	50	- 68.8	- 10.0	1.3	1.0
114 Fishing, hunting and trapping		-	20	-	1.3	0.5	0.2
1151/2 Support activities for farms		-	-	-	11.3	-	0.1
1153 Support activities for forestry		10	20	100.0	- 21.5	0.5	0.3
21 Mining and oil and gas extraction		40	80	100.0	42.6	2.0	0.9
22 Utilities		20	40	100.0	- 3.4	1.0	0.5
23 Construction		330	435	31.8	39.9	11.0	7.5
31-33 Manufacturing		235	245	4.3	- 2.7	6.2	8.5
311 Food manufacturing		35	35	-	3.6	0.9	1.0
321 Wood product manufacturing		50	25	- 50.0	- 16.1	0.6	1.7
322 Paper manufacturing		90	110	22.2	- 13.5	2.8	0.6
41 Wholesale trade		30	45	50.0	11.6	1.1	4.1
44-45 Retail trade		480	595	24.0	6.9	15.0	11.2
441 Motor vehicle and parts dealers		65	70	7.7	9.0	1.8	1.1
445 Food and beverage stores		145	175	20.7	8.4	4.4	2.9
448 Clothing & clothing accessories		50	50	-	9.2	1.3	1.1
452 General merchandise stores		45	40	- 11.1	6.5	1.0	1.2
48-49 Transportation & warehousing		130	115	- 11.5	0.6	2.9	5.2
51 Information and cultural industries		90	115	27.8	- 5.3	2.9	2.6
52 Finance and insurance		135	135	-	4.5	3.4	3.8
53 Real estate & rental/leasing		70	125	78.6	22.1	3.1	2.3
54 Prof'sonal, scientific & tech. serv.		150	180	20.0	18.6	4.5	7.3
55 Mgmt. of companies/ent'prises		-	-	-	126.6	-	0.1
56 Admin+support, waste mgmnt srv.		100	190	90.0	20.4	4.8	4.4
61 Educational services		185	250	35.1	9.2	6.3	6.9
62 Health care and social assistance		430	470	9.3	6.5	11.8	9.6
71 Arts, entertainment and recreation		105	110	4.8	11.3	2.8	2.3
72 Accommodation and food services		355	235	- 33.8	7.7	5.9	8.1
721 Accommodation services		110	35	- 68.2	2.5	0.9	1.7
722 Food services & drinking places		245	200	- 18.4	9.2	5.0	6.4
81 Other services (excl. public admin.)		180	230	27.8	11.8	5.8	4.9
91 Public administration		200	170	- 15.0	- 2.0	4.3	5.0
Special Aggregations	Agriculture, Food and Beverage	80	100	25.0	5.8	2.5	2.9
	Fishing and Fish Processing	30	30	-	- 3.3	0.8	0.5
	Logging and Forest Products	310	205	- 33.9	- 14.7	5.2	3.7
	Mining and Mineral Products	70	125	78.6	17.1	3.1	2.1

Source: Statistics Canada. Industry according to NAICS version used in each census. Unpublished data.

5		Business Locations- Number of Firms by Employment Size Range									
		Firms with no employees		Firms with employees		% change		Sunshine Cst RD			
		Sunshine Cst RD	BC	Sunshine Cst I	BC	Sunshine Cst RD	1 to 19	20 to 49	50-199	200 Plus	
2008		1,554	185,879	1,188	175,003	-	1,099	66	18	5	
2009		1,081	186,541	940	176,124	- 20.9	864	58	13	5	
2010		1,598	194,349	1,203	175,913	28.0	1,118	63	17	5	
2011		1,565	195,290	1,186	173,589	- 1.4	1,103	62	16	5	

Source: Business Register, Statistics Canada. In some areas, boundary changes/geocoding changes may cause large changes.

6		Municipal Residential Taxes and Charges on a Representative House					
		Sechelt					
		House Value		Taxes & Charges			
Year	\$	% change	\$	% change			
2007	379,122		2,792				
2008	405,139	6.9	2,810	0.7			
2009	408,763	0.9	3,104	10.4			
2010	412,218	0.8	3,372	8.6			
2011	418,878	1.6	3,461	2.6			

Source: Ministry of Community Development http://www.cd.gov.bc.ca/lgd/infra/statistics_index.htm (No RD level figures)

Sechelt District Municipality

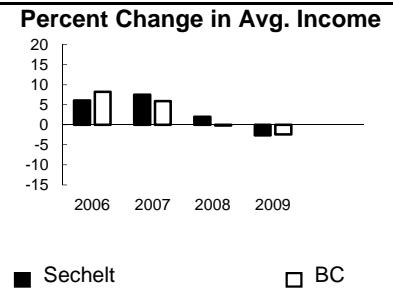
7 Values of Building Permits										
Year	Residential				Non-Residential			Total		Year
	Number of Units		Value \$'000		Value \$'000			Value \$'000		
	Sechelt	BC	Sechelt	BC	Sechelt	BC	Sechelt	BC		
2007	120	40,932	29,795	8,611,723	3,539	3,932,968	33,334	12,544,691	2007	
2008	77	30,110	29,518	6,899,289	936	3,677,866	30,454	10,577,155	2008	
2009	70	18,607	18,566	4,491,075	3,127	3,138,810	21,693	7,629,885	2009	
2010	138	28,984	27,132	6,705,888	704	3,017,921	27,836	9,723,809	2010	
2011	57	25,745	16,041	6,113,406	1,922	3,136,361	17,963	9,249,767	2011	

Source: Statistics Canada

Note: Detailed non-residential permits data can be found on our Website: www.bcstats.gov.bc.ca

A dash can indicate a nil report, a value of less than \$500, or non-reporting. P indicates 'preliminary'.

8 Personal Taxation Statistics						Percent Change in Avg. Income	
Total Income of All Returns							
Year	All Returns (number)		Average Income (\$)		% Change avg. income		
	Sechelt	BC	Sechelt	BC	Sechelt	BC	
2005	7,840	3,154,090	32,564	35,601	n/a	n/a	
2006	7,810	3,165,750	34,527	38,523	6.0	8.2	
2007	8,360	3,287,750	37,119	40,802	7.5	5.9	
2008	8,500	3,383,640	37,842	40,736	1.9	-0.2	
2009	8,600	3,406,860	36,852	39,754	-2.6	-2.4	



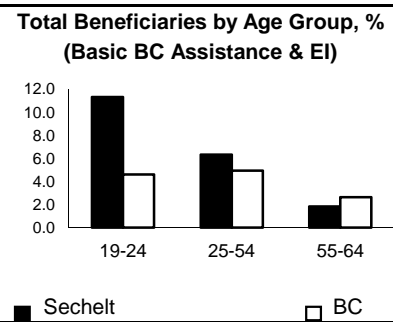
Taxation data available at: <http://www.bcstats.gov.bc.ca/data/dd/income.asp>

Source of Total Income 2009				% Distribution, Total Income					
	Sechelt		BC						
	\$Thousands	% of Total							
Employment	149,643	47.2	63.7						
Pension	84,049	26.5	13.8						
Investment	34,097	10.8	9.8						
Self-Employed	22,155	7.0	5.3						
Other	18,800	5.9	5.3						
Tax Exempt	8,181	2.6	2.0						
Total	316,927	100.0	100.0						



Source: Canada Revenue Agency. Areas are defined by postal codes and may not match municipal boundaries.

9 Dependency on the Safety Net							Total Beneficiaries by Age Group, % (Basic BC Assistance & EI)		
Percentage of Population by Age Receiving Benefits - September 2009									
Age Group	BC Basic* Income Assistance Recipients (%)		Employment Insurance Beneficiaries (%)		Total of BC Basic Income Assistance & EI Beneficiaries (%)				
	Sechelt	BC	Sechelt	BC	Sechelt	BC			
Under 19	5.3	2.7							
19-24	6.9	2.1	4.8	2.6	11.3	4.6			
25-54	3.3	1.9	3.1	3.1	6.3	4.9			
55-64	0.6	0.7	1.3	2.0	1.8	2.6			
19-64	2.7	1.7	2.7	2.8	5.4	4.4			



* On temporary assistance only. Excluded are those on Continuous Assistance, aboriginals living on reserve, seniors/OAS, & children living with relatives.

Source: BC Stats (using administrative files from the BC Ministry of Housing & Social Development, and Human Resources & Social Development Canada)

Note: EI Beneficiaries reports now include regular, fishing and employment benefits, work sharing and support measures. The reports exclude sickness, maternity and parental benefits.

10 Business Formations and Failures									
Incorporations				Bankruptcies					
Year	Number		Year	Vancouver CMA		Mainland/Southwest DR		BC	
	Sechelt	BC		Business	Consumer	Business	Consumer	Business	Consumer
2007	47	34,036	2005	314	3671	n.a.	n.a.	786	8,168
2008	33	30,085	2006	230	3332	281	3,931	585	7,020
2009	33	26,431	2007	201	3091	230	3,653	470	6,651
2010	33	30,305	2008	161	3361	187	3,985	454	7,293
2011	31	30,844	2009	181	4686	219	5,638	380	10,639

Source: BC Ministry of Finance

Source: Office of the Superintendent of Bankruptcy, Government of Canada

Incorporations are counted in municipality of the registered office address which may differ from the actual business location.

Note: Bankruptcy is by urban postal code forward sortation area and is counted where it is filed.